

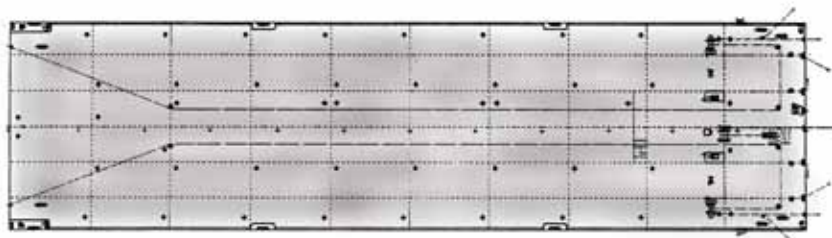
CASTORO XI

HEAVY DUTY CARGO BARGE

PROFILE



MAIN DECK ELEVATION 9,000 mm



HULL TYPE

Flat bottom

CLASS

R.I.Na. 100 A 1.1

DIMENSIONS

150 m x 40 m x 9 m

MAX. DRAUGHT

6.5 m

GROSS TONNAGE

15,400 tons

FREE DECK AREA

5,200 sq.m

CARGO DEAD-WEIGHT

29,469 tons

DECK CAPACITY

Distributed load: 15 tons/sq.m
Concentrated load on transverse frame: 500 tons
Concentrated load on bulkhead/transverse frame: 1,250 tons
Concentrated load on side shell/transverse frame: 1,250 tons

BALLAST TANK CAPACITY

38,975 cu.m

FUEL OIL CAPACITY

58 tons

FRESH WATER CAPACITY

8 tons

EQUIPMENT

Ballast system: 4 E./pumps 1,000 cu.m/h. each 18 mlc total head
Remote control operation of ballast system with draft and tank level gauging
Fire/bilge system: 2 E./pumps 100 cu.m/h. 60 mlc total head
Auxiliary/emergency system: 2 E./pumps 60 cu.m/h 15 mlc total head
Electric power plant: 2 x 320 kw main diesel generators, 1 x 35 kw aux. diesel generator
Air compressor: 2 x 700 cu.m/h 7 bar for general service, 1 x 20 cu.m/h. 30 bar starting compressor, 1 x 7.5 cu.m/h. 30 bar reservoir

MOORING SYSTEM

1 10 tons hydraulic anchor winch
storage capacity drum 1,000 m x 51 mm diameter wire rope
2 hydraulic mooring winches
storage capacity drum 1,000 m x 38 mm diameter wire rope
1 hydraulic mooring winch for towline
storage capacity drum 100 m x 32 mm diameter wire rope
1 bridle chain of main towing line suitable for a tug pull of 200 tons

Castoro XI is designed to maximise deck strength and point-load bearing capacity to support high module loads without the need for extensive grillage and, in consequence, with significant savings in time and costs. Furthermore length, width and draft restrictions imposed by most of the North Sea load-out quays have been taken into careful consideration. The result is a new transportation barge in the market place, with modern and innovative technical characteristics, able to efficiently meet the needs of the offshore industry of today and for some time into the future.

